

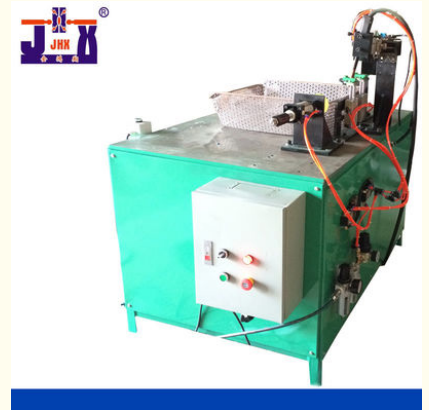


Single Gun Automatic CO2 Welding Machine Gas Shielded 380V

Our Product Introduction

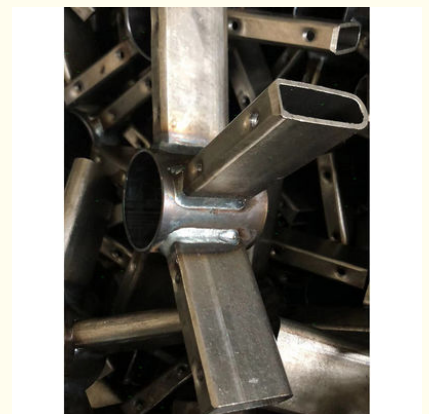
Basic Information

- Place of Origin: Guangdong, China
- Brand Name: Jin Hongxiang
- Model Number: JLH
- Minimum Order Quantity: 1 set
- Price: \$7,999.00/sets 1-1 sets
- Packaging Details: Export wooden case
- Delivery Time: 5-10 days or negotiation
- Supply Ability: 100 Set/Sets per Month



Product Specification

- Machine Type: Automatic Gas Shielded Welding
- Core Components: PLC Programming, Touch Screen Display
- Key Selling Points: Exquisite Design, Precise Processing,
- Weight (KG): 200
- Voltage: 380V
- Usage: Spot Welding Or Pull Welding
- Feature: Fully Automatic
- Advantage: High Speed Stability
- Highlight: **Single Gun Automatic CO2 Welding Machine, Automatic CO2 Welding Machine 380V, Gas Shielded Gun Welding Machine**



Product Description

CO2 gas shielded automatic welding machine 1 welding gun

This machine is a gun automatic welding machine. The welding power is CO2 welding machine.

CO2 gas shielded single gun automatic welding machine

This machine is a CO2 gas shielded automatic welding machine for straight seam pull welding..
With manual welding and foot switch automatic welding mode, it is convenient, practical and fast

Before welding the workpiece:

Turn on the power of the control box and CO2 welding machine, and check whether the power of the machine is normal.

1. Use the manual button switch to conduct manual preliminary mold welding.
2. Use the foot switch to conduct automatic preliminary mold like welding.

The power supply is normal, and the debugging and positioning of the workpiece before welding are required.

1. Place the workpiece to be welded, manually clamp the material (X1) to check the positioning of the product to make it reach the ideal positioning position, fine tune the adjustable cylinder to adjust the pressing position to make it just right.
2. Press the welding switch (Y0) to adjust the welding stroke. Make the welding stroke suitable for the workpiece to be welded.

Batch welding workpiece:

1. Start the welding machine switch (X5) on the electric box, and the foot switch starts welding
 2. After welding a product, release the foot switch. Take away the workpiece. Restart the welding of the next workpiece.
- In case of any abnormality during operation, press the emergency stop switch (X0) to stop the operation immediately.





Application

Independent R & D and production, focusing on welding and forming equipment for more than 20 years. It is exported to the world, and there are sales companies in Vietnam. It has accumulated tens of thousands of customers.

FAQ

Q: What is your normal lead time?

A. If there is stock, our company usually receives the payment for goods and delivers them within a week. If it needs to be customized, the delivery cycle is usually 3-4 weeks after receiving the deposit.

Q: What are your terms of payment?

A: We accept TT.

Q: What kind of packing do you offer?

A. Packaging is usually installed for the export of plywood boxes.

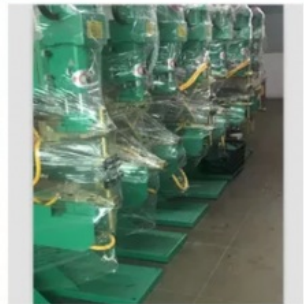
Q: What is the minimum order quantity you can produce?

A. Usually we have them in stock, and the minimum order is 1 set.

Q: How to control product quality?

A. We always attach great importance to product quality. Before leaving the factory, it will be fully aged and debugged. And we always adhere to the principle of "providing customers with better quality, better price and better service."

III FACTORY OVERVIEW



Dongguan Jinghongxiang Automation Equipment Co., Ltd.



13925780098



jhx16888@gmail.com



wire-bendingmachine.com

No. 78, Shangzhong Road, Shangdi Industrial Zone, Liaobu Town, Dongguan, Guangdong, China